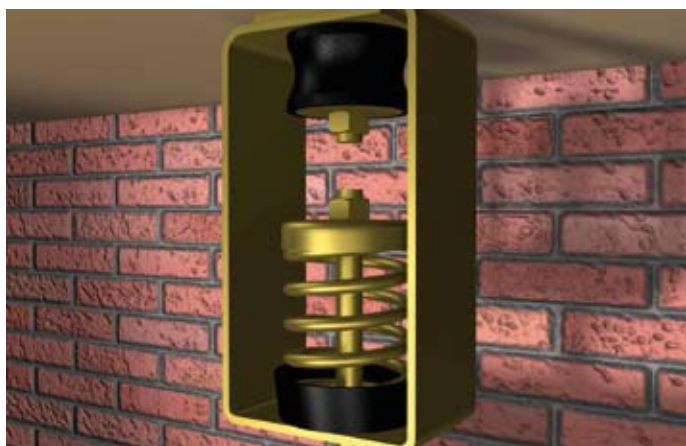


## CEILING MOUNTS

# Spring Rubber® ceiling hanger

Load from 8 to 100 kg.

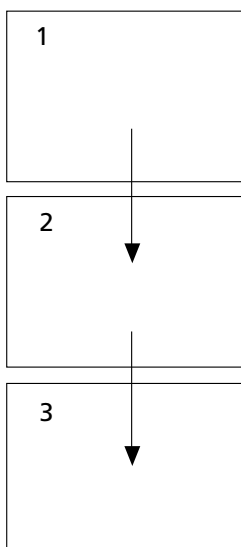
This is a new range of anti-vibration mounts, combining the high deflection of the spring with the dampening properties of the rubber. The metallic structure is very robust and it is supplied with an anticorrosive zinc-plated coat.



To select correct mounting, following data are needed:

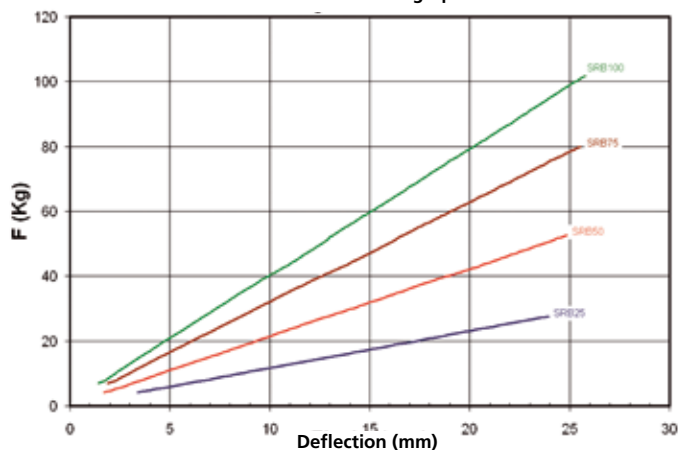
- Load per mounting (kg)
- Disturbing frequency (Hz)

Select correct load line in diagram 1 and refer to diagram 2 to obtain the Natural frequency. With this natural frequency prolong this line to the diagram 3 and obtain the % of isolation at the given frequency of excitation.

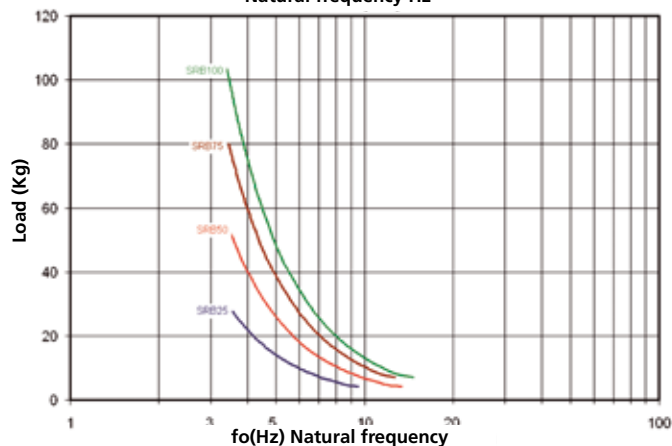


### Dynamic behaviour

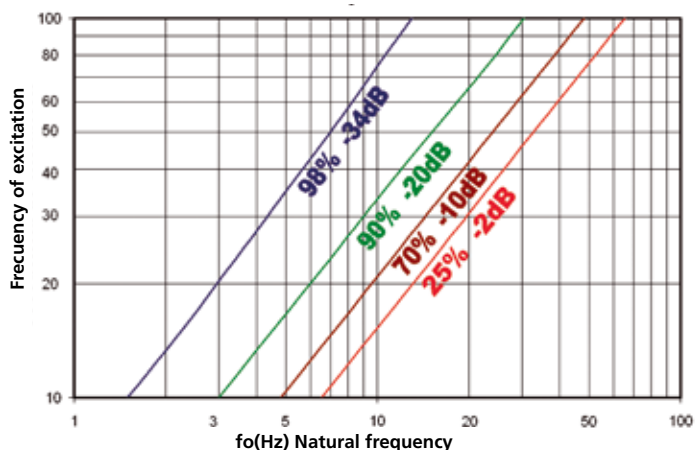
Static load deflection graph



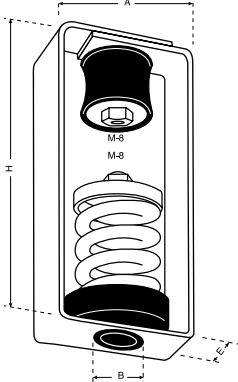
Natural frequency Hz



% of isolation and attenuation in dB



CEILING MOUNTS

	REF. AMC	MAX PERMANENT LOAD	DIMENSIONS					CODE
			A	H	B	C	E	
	SRB-25	<b>8-100 kg</b>	75	150	30	12	50	23401
	SRB-50	<b>8-100 kg</b>	75	150	30	12	50	23402
	SRB-75	<b>8-100 kg</b>	75	150	30	12	50	23403
	SRB-100	<b>8-100 kg</b>	75	150	30	12	50	23404

