

FLOATING FLOOR MOUNTS

Floating floor mounts

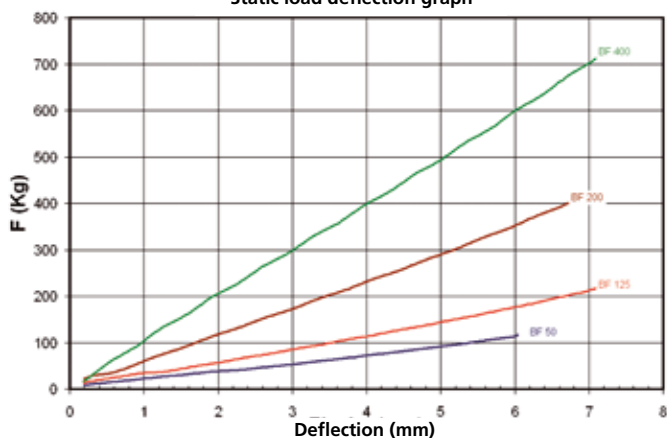
Load from 50 to 400 kg

A range designed for use in floating floors or machinery working at more than 700 r.p.m. Manufactured in rubber SMR 5CV type with excellent mechanical insulation qualities. We are able to manufacture them in different diameters and heights.

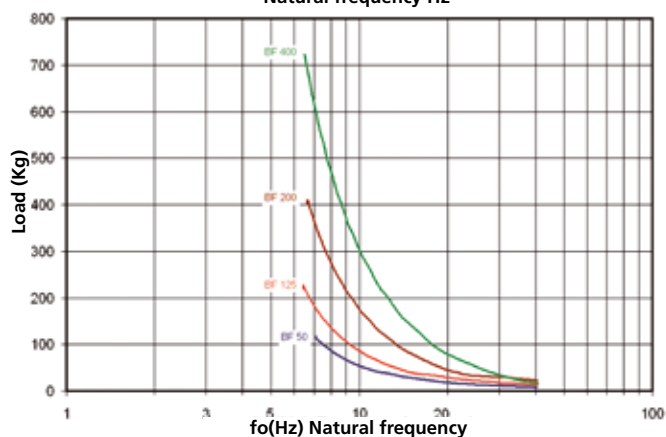


Dynamic behaviour

Static load deflection graph



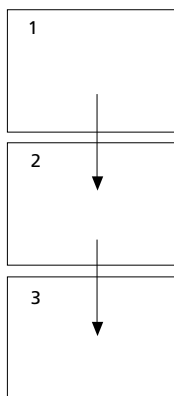
Natural frequency Hz



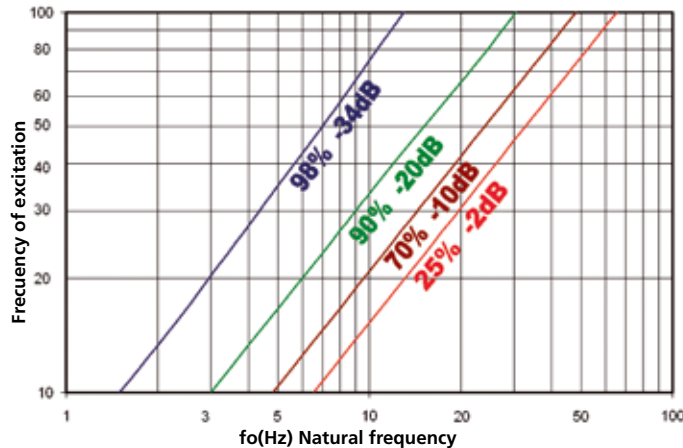
To select correct mounting, following data are needed:

- Load per mounting (kg)
- Disturbing frequency (Hz)

Select correct load line in diagram 1 and refer to diagram 2 to obtain the Natural frequency. With this natural frequency prolong this line to the diagram 3 and obtain the % of isolation at the given frequency of excitation.



% of isolation and attenuation in dB



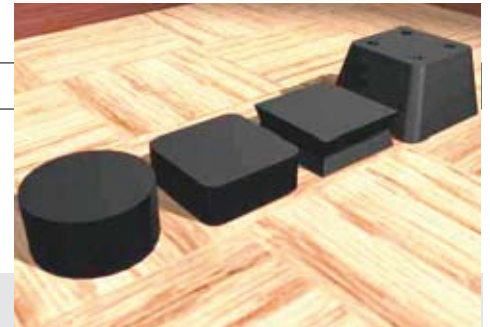
	REF. AMC	MAX PERMANENT LOAD	Ø	Height	CODE
		BF 50	50 kg	40	28
BF 125		125 kg	60	36	24202
BF 200		200 kg	80	40	24203
BF 400		400 kg	95	40	24204

FLOATING FLOOR MOUNTS

G Supporting blocks

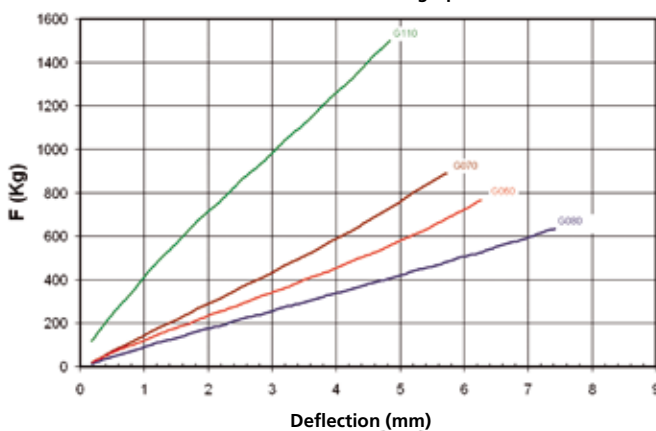
Load from 300 to 800 kg

A range of rectangular mounts ideal for those instalations that do not need anchoring or fixation.

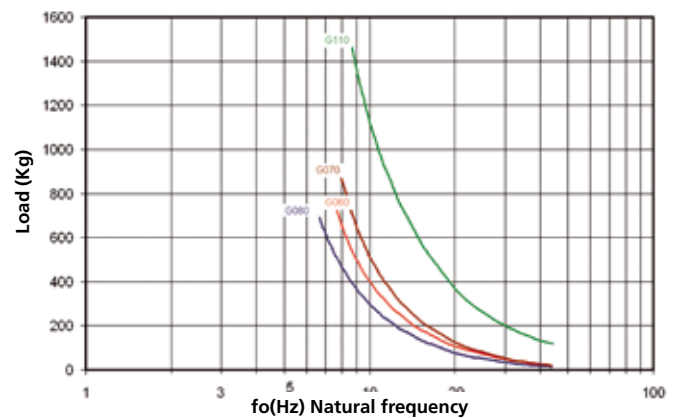


Dynamic behaviour

Static load deflection graph



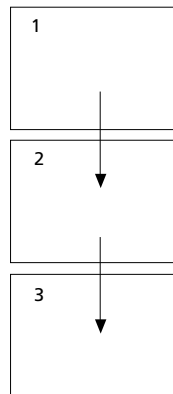
Natural frequency Hz



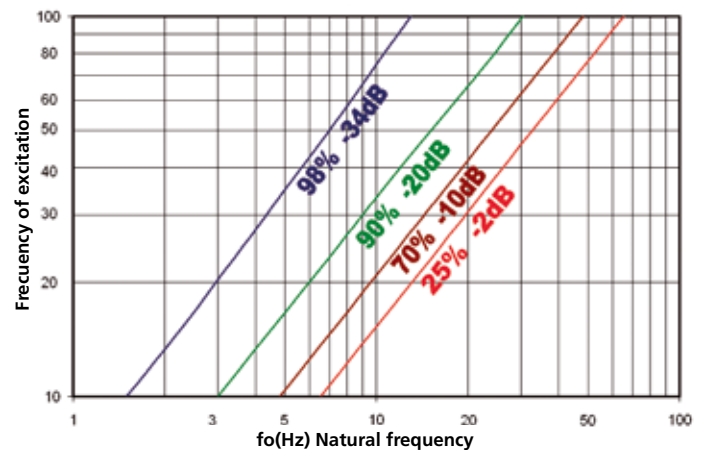
To select correct mounting, following data are needed:

- Load per mounting (kg)
- Disturbing frequency (Hz)

Select correct load line in diagram 1 and refer to diagram 2 to obtain the Natural frequency. With this natural frequency prolong this line to the diagram 3 and obtain the % of isolation at the given frequency of excitation.



% of isolation and attenuation in dB



	REF. AMC	MAX PERMANENT LOAD	A	B	CODE
	G-060	400 kg	70	30	152005
	G-070	600 kg	80	30	152006
	G-110	800 kg	110	30	152009
	G-080	300 kg	80	50	152007