

AKUSTIK + SYLOMER®: MODELS AND DIMENSIONS

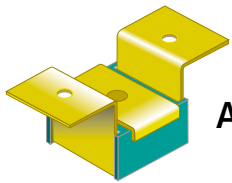
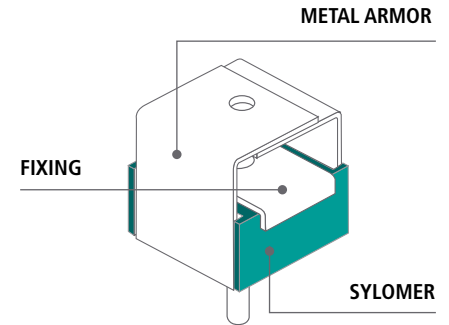
PRODUCT DESCRIPTION

These antivibration mounts have been conceived for suspension from false ceilings, vibrating pipelines and machinery that has to be suspended.

The excellent properties of the Sylomer® microcelular polyurethane achieve elevated isolation values as opposed to other mounts using rubber or cork, or a combination of both. These antivibration mounts are manufactured in two special

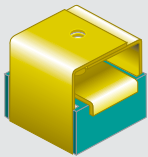
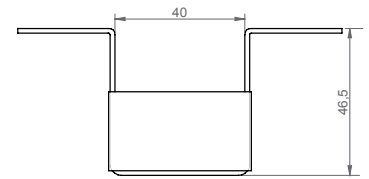
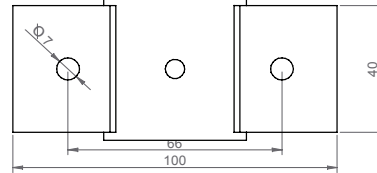
mixes of Sylomer® to adapt better to the load of each application.

A great variety of fixing metal armors and elements facilitate installation and adapt better to each type of job. Their rugged metal parts withstand can tensile stresses from 650 kg to 1000 kg. They are supplied with an anticorrosive treatment that can withstand the toughest environments.



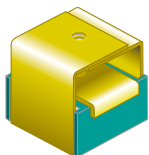
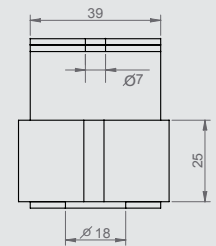
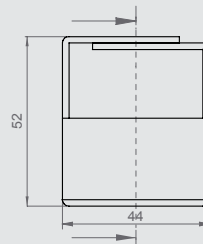
Akustik 1

It is secured directly to the ceiling by means of two holes.



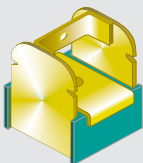
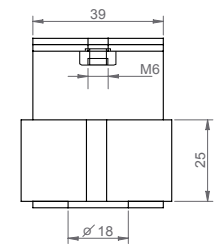
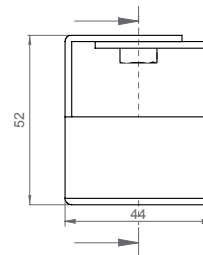
Akustik 3

It is secured directly to the ceiling with a screw and locking nut



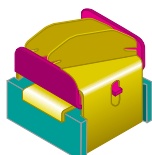
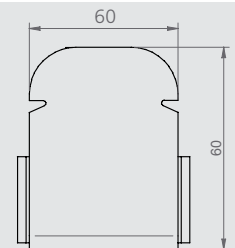
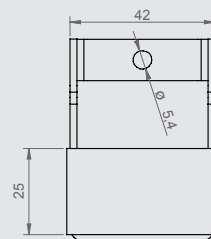
Akustik 4

It is secured with a screw via a nut welded to the metal armor.



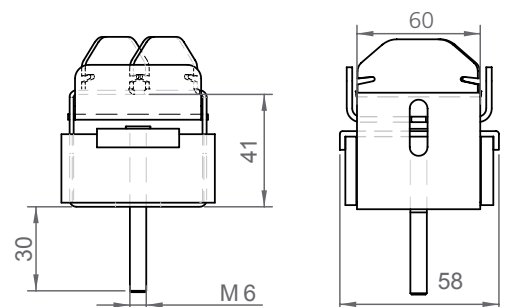
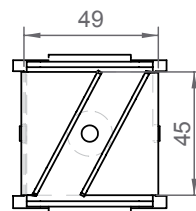
Akustik Rapid

Designed to be secured to most profiles on the market. Its design makes for easy and safe installations.



Akustik Safety

Its gravitational system guarantees correct installation and offers greater safety, preventing elements from becoming detached. Thanks to its design, the mount will not attach to the profile if it is not installed properly. It prevents possible slip-ups. Its 45° forked design makes installation and removal easy and safe.

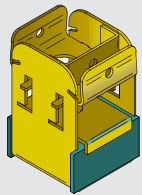
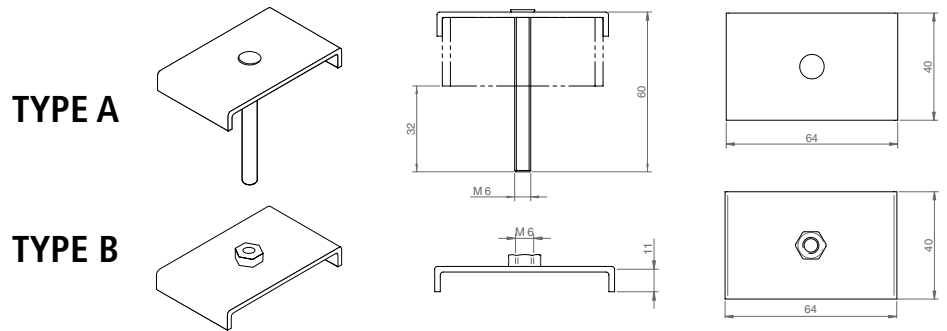


AKUSTIK + SYLOMER[®]: MODELS AND DIMENSIONS

TYPE OF FIXING

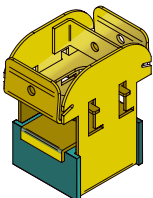
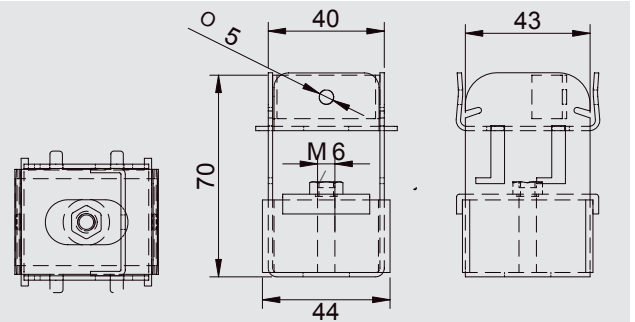
For installations where M6 male fixing is required, the recommended fixing is **Type A**.

For installations where M6 female fixing is required, the recommended fixing is **Type B**.



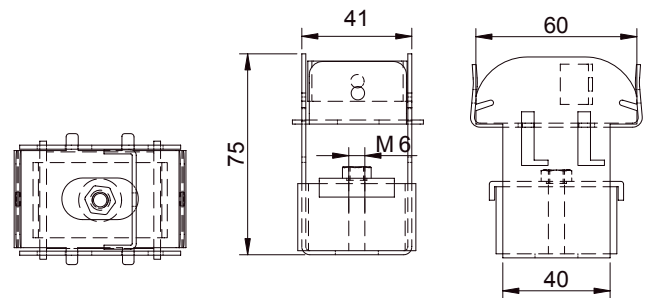
Akustik Super T47

The "SUPER" security feature is adaptable to the different profiles existing on the market.

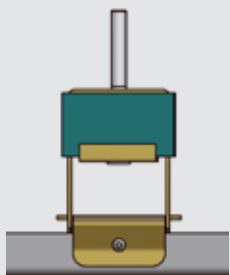


Akustik Super T60

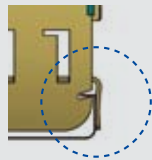
The external dimension of the profiles that exist on the market may vary, our "SUPER" security system with lip form adapts to the different lengths of the profile having a tight fit.



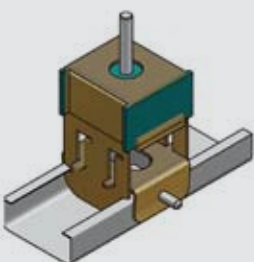
INSTALLATION STEPS OF AKUSTIK SUPER



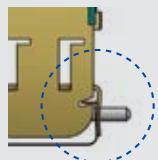
Detail A



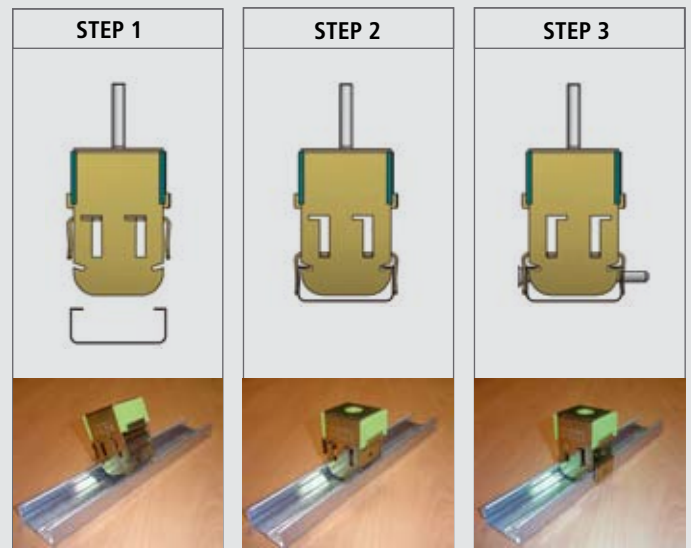
1• The security system is adaptable to different widths of profiles.



Detail B



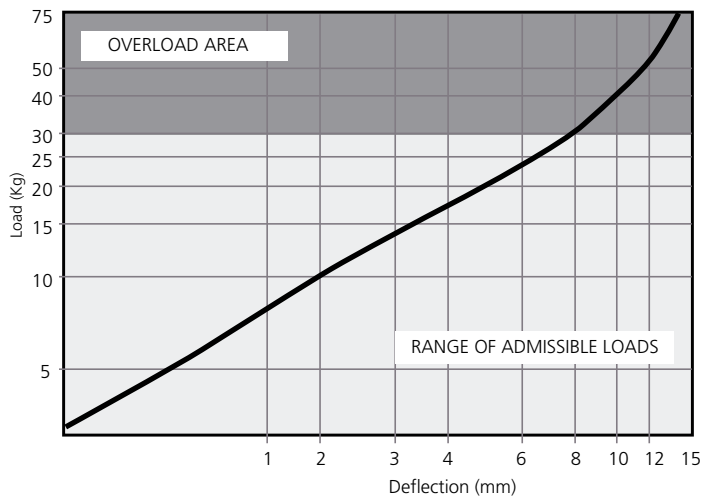
2• The "SUPER" security system admits the possibility of inserting a blocking screw.



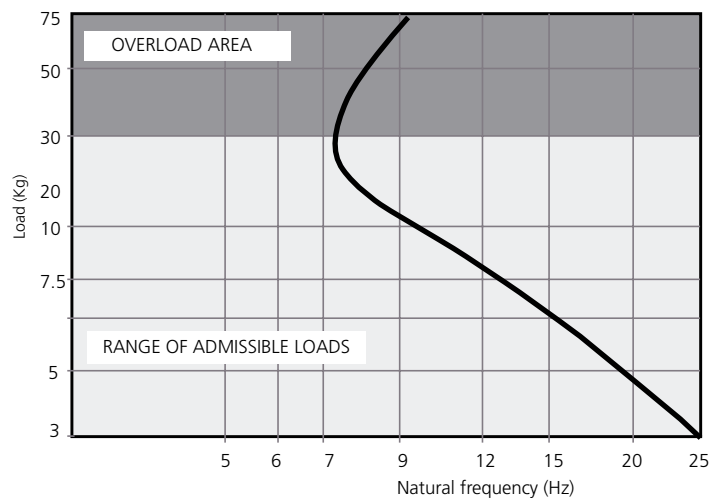
AKUSTIK + SYLOMER[®]: MODELS AND DIMENSIONS

TYPES OF SYLOMER

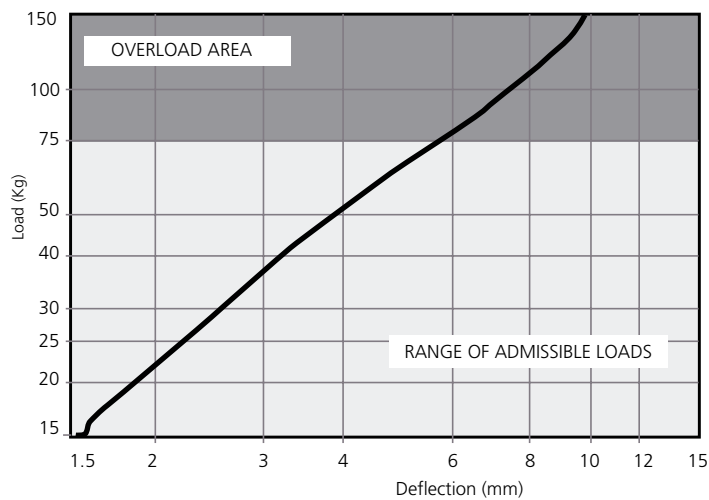
LOAD DEFLECTION GRAPH
Akustik + Sylomer **30**



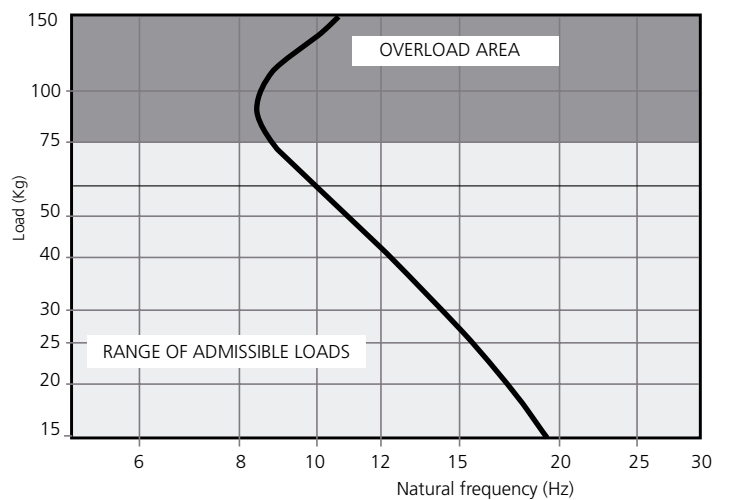
NATURAL FREQUENCY
Akustik + Sylomer **30**



LOAD DEFLECTION GRAPH
Akustik + Sylomer **75**



NATURAL FREQUENCY
Akustik + Sylomer **75**

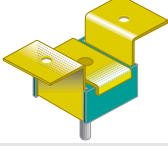
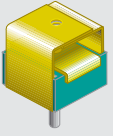
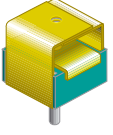
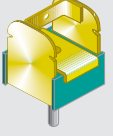

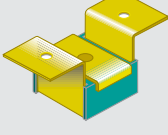
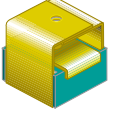
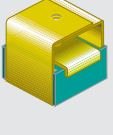
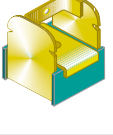
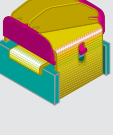


Application of an Akustik 4+Sylomer 30 type A

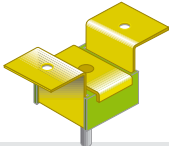
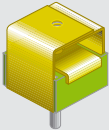
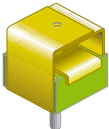

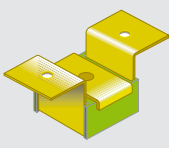
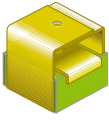
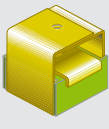



Application of an Akustik Super T60 +Sylomer 30 type B

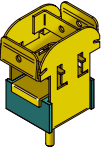
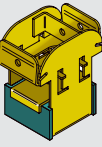
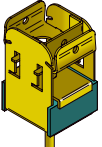
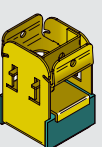
AKUSTIK + SYLOMER[®]: RANGE

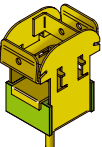
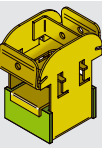

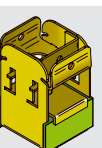
	DESCRIPTION	SUMMARY	(Kg) MAX. LOAD	REF.
	Akustik 1 + Sylomer@30 Type A	Metal armor of the Akustik 1 secured to the ceiling with two holes and an M6 male fixing type (Type A)	30	23501
	Akustik 3 + Sylomer@30 Type A	Metal armor of the akustik 3 secured to the ceiling by an M6 screw and with a nut.	30	23503
	Akustik4 + Sylomer@30 Type A	Metal armor of the Akustik 4 secured to the ceiling by an M6 screw.	30	23505
	Akustik Rapid + Sylomer@30 Type A	Metal armor of the Akustik rapid secured to the ceiling by an M6 screw.	30	23507
	Akustik Safety + Sylomer@30 Type A	Metal armor of the Akustik Safety secured to the ceiling by an M6 screw.	30	23508
	Akustik 1 + Sylomer@30 Type B	Metal armor of the Akustik 3 secured to the ceiling by a welded M6 nut.	30	23509
	Akustik 3 + Sylomer@30 Type B	Metal armor of the Akustik 4 secured to the ceiling by a welded M6 nut.	30	23511
	Akustik4 + Sylomer@30 Type B	Metal armor of the Akustik Rapid secured to the ceiling by a welded M6 nut.	30	23513
	Akustik Rapid + Sylomer@30 Type B	Metal armor of the Akustik Safety secured to the ceiling by an M6 screw.	30	23515
	Akustik Safety + Sylomer@30 Type B	Metal armor of the Akustik Safety secured to the ceiling by a welded M6 nut.	30	23516

AKUSTIK + SYLOMER[®]: RANGE

	DESCRIPTION	SUMMARY	(Kg) MAX. LOAD	REF.
	Akustik 1 + Sylomer@75 Type A	Metal armor of the Akustik 1 secured to the ceiling with two holes and an M6 male fixing type (Type A)	75	23517
	Akustik 3 + Sylomer@75 Type A	Metal armor of the akustik 3 secured to the ceiling by an M6 screw and with a nut.	75	23519
	Akustik4 + Sylomer@75 Type A	Metal armor of the Akustik 4 secured to the ceiling by an M6 screw.	75	23521
	Akustik Rapid + Sylomer@75 Type A	Metal armor of the Akustik rapid secured to the ceiling by an M6 screw.	75	23523
	Akustik Safety + Sylomer@75 Type A	Metal armor of the Akustik 1 secured to the ceiling by a welded M6 nut.	75	23524
	Akustik 1 + Sylomer@75 Type B	Metal armor of the Akustik 3 secured to the ceiling by a welded M6 nut.	75	23525
	Akustik 3 + Sylomer@75 Type B	Metal armor of the Akustik 4 secured to the ceiling by a welded M6 nut.	75	23527
	Akustik4 + Sylomer@75 Type B	Metal armor of the Akustik Rapid secured to the ceiling by a welded M6 nut.	75	23529
	Akustik Rapid + Sylomer@75 Type B	Metal armor of the Akustik Safety secured to the ceiling by an M6 screw.	75	23531
	Akustik Safety + Sylomer@75 Type B	Metal armor of the Akustik Safety secured to the ceiling by a welded M6 nut.	75	23533

AKUSTIK SUPER + SYLOMER®: RANGE

	DESCRIPTION	SUMMARY	(Kg) MAX. LOAD	REF.
	Akustik Super T60 + Sylomer®30 Type A	Metal armor of the Akustik Super secured to the ceiling by an M6 screw.	30	23831
	Akustik Super T60 + Sylomer®30 Type B	Metal armor of the Akustik Super secured to the ceiling by an M6 screw.	30	23832
	Akustik Super T47 + Sylomer®30 Type A	Metal armor of the Akustik Super secured to the ceiling by an M6 screw.	30	23821
	Akustik Super T47 + Sylomer®30 Type B	Metal armor of the Akustik Super secured to the ceiling by an M6 screw.	30	23822

	DESCRIPTION	SUMMARY	(Kg) MAX. LOAD	REF.
	Akustik Super T60 + Sylomer®75 Type A	Metal armor of the Akustik Super secured to the ceiling by an M6 screw.	75	23851
	Akustik Super T60 + Sylomer®75 Type B	Metal armor of the Akustik Super secured to the ceiling by an M6 screw.	75	23852
	Akustik Super T47 + Sylomer®75 Type A	Metal armor of the Akustik Super secured to the ceiling by an M6 screw.	75	23841
	Akustik Super T47 + Sylomer®75 Type B	Metal armor of the Akustik Super secured to the ceiling by an M6 screw.	75	23842