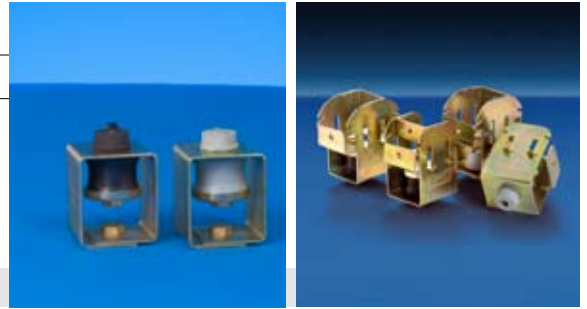


CEILING MOUNTS

Akustik ceiling hanger

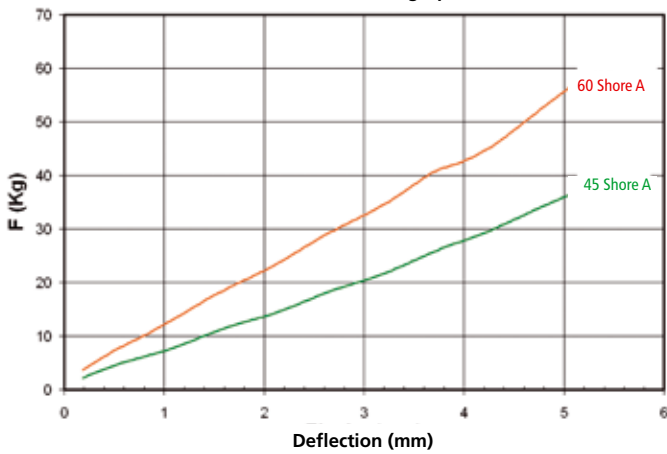
A-45 Loads from 8 to 30 kg B-60 Loads from 25 to 60 kg

Range designed for suspension of false acoustic ceilings and machinery operating at more than 1.000 r.p.m. The same vibration damping element which is used throughout the Akustik range is made of rubber of high mechanical performance; it is specially designed for vibration damping. The metallic structure is designed to resist loads up to 650 kg. It is supplied with an anti-corrosive zinc-plated coat.

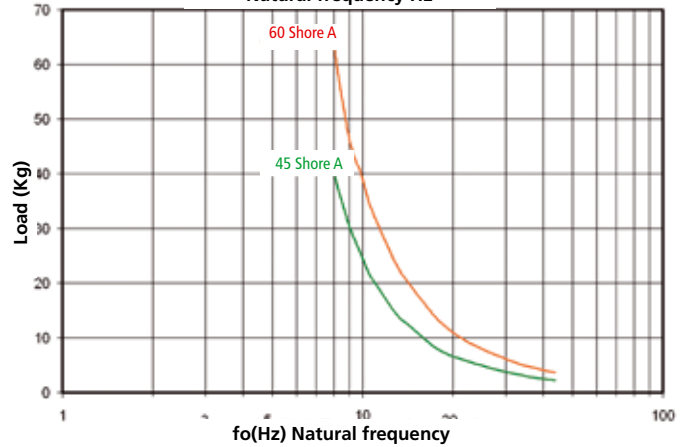


Dynamic behaviour

Static load deflection graph



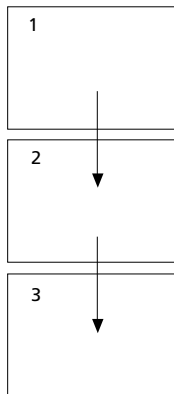
Natural frequency Hz



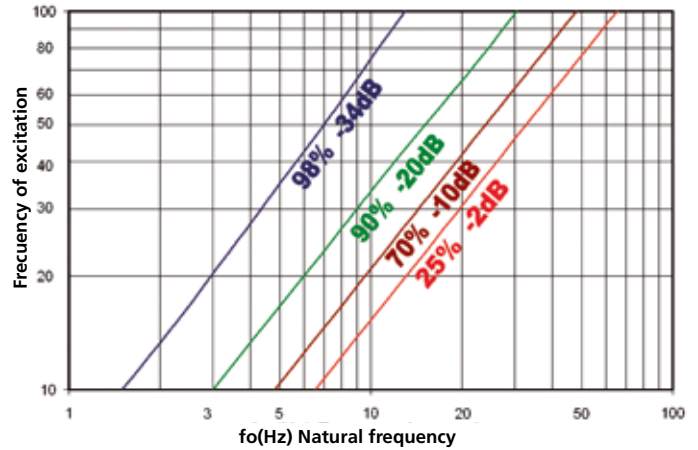
To select correct mounting, following data are needed:

- Load per mounting (kg)
- Disturbing frequency (Hz)

Select correct load line in diagram 1 and refer to diagram 2 to obtain the Natural frequency. With this natural frequency prolong this line to the diagram 3 and obtain the % of isolation at the given frequency of excitation.



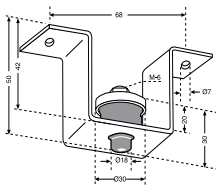
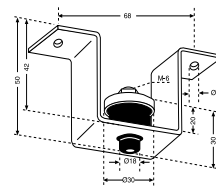
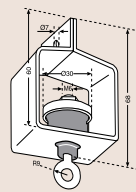
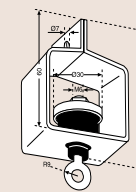
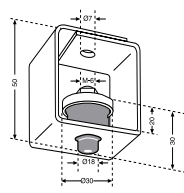
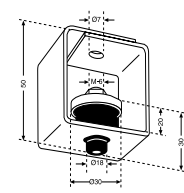
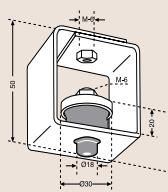
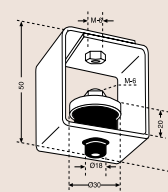
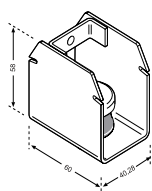
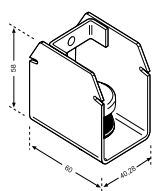
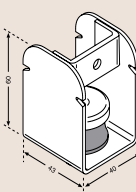
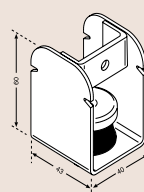
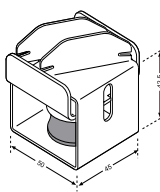
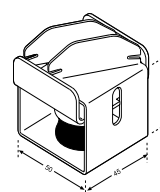
% of isolation and attenuation in dB



REF. AMC	LOAD	CODE
<p>Akustik Super T-47 A-45</p>	8-30 kg	23801
<p>Akustik Super T-47 B-60</p>	25-60 kg	23802

REF. AMC	LOAD	CODE
<p>Akustik Super T-60 A-45</p>	8-30 kg	23811
<p>Akustik Super T-60 B-60</p>	25-60 kg	23812

CEILING MOUNTS

REF. AMC	LOAD	CODE	SUMMARY	REF. AMC	LOAD	CODE	SUMMARY
 Akustik 1 A-45	8-30 kg	23101	Fitted directly to ceiling using two holes.	 Akustik 1 B-60	25-60 kg	23102	Fitted directly to ceiling using two holes.
 Akustik 2 A-45		23111	Colocación al techo mediante ganchos.	 Akustik 2 B-60		23112	Anchoring to the ceiling with hooks.
 Akustik 3 A-45		23121	Fitted by using an M-6 rod and a nut.	 Akustik 3 B-60		23122	Fitted by using an M-6 rod and a nut.
 Akustik 4 A-45		23131	Fitted to ceiling using an M-6 rod.	 Akustik 4 B-60		23132	Fitted to ceiling using an M-6 rod.
 Akustik Rapid T-60 A-45		23143	Fitted to ceiling using an M-6 rod.	 Akustik Rapid T-60 B-60		23144	Fitted to ceiling using an M-6 rod.
 Akustik Rapid T-47 A-45		23145	Designed for easy and accessible fitting together with great strenght.	 Akustik Rapid T-47 B-60		23146	Designed for easy and accessible fitting together with great strenght.
 Akustik Safety T-47 A-45		23210	The rotational system of the part assures the correct installation thanks to the design of the metal part at 45°.	 Akustik Safety T-47 B-60		23213	The rotational system of the part assures the correct installation thanks to the design of the metal part at 45°.

Steps of the installation for the Akustik Safety



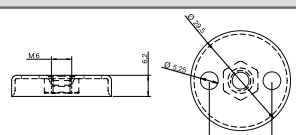
1. Place the part inside the beam.



2. Turn the part inside the beam until it is fixed.



3. The safety system falls by gravity, embracing the profile automatically.

REF. AMC	CODE
 Levelling bell	23159