

## SPECIFICATIONS

# PS WHITE

15mm

25mm

40mm

White PU film and absorbing polyurethane foam.



### Overall air-borne noise isolation use

Measurements according to UNE-EN ISO 140-3 standard (December 1995) Acoustic Isolation of Construction Materials in Laboratory Measurements.  
Corresponds completely with ISO 140-3(1995) standard.  
Cancels and substitutes UNE 74-040/3 (1984) standard.  
Calculations according to NBCEA88.

DESCRIPTION	R' (dB)
PS-15 ON 2mm SHEET	12
PS-25 ON 2mm SHEET	12
PS-40 ON 2mm SHEET	17

### Composition

White PU film and absorbing polyurethane foam.

### Applications

Interior lining of soundproof cabins or vehicles where the danger of hydrocarbons or water coming in contact with the absorbent material exists.

### Thicknesses

15mm 25mm 40mm

### Formats

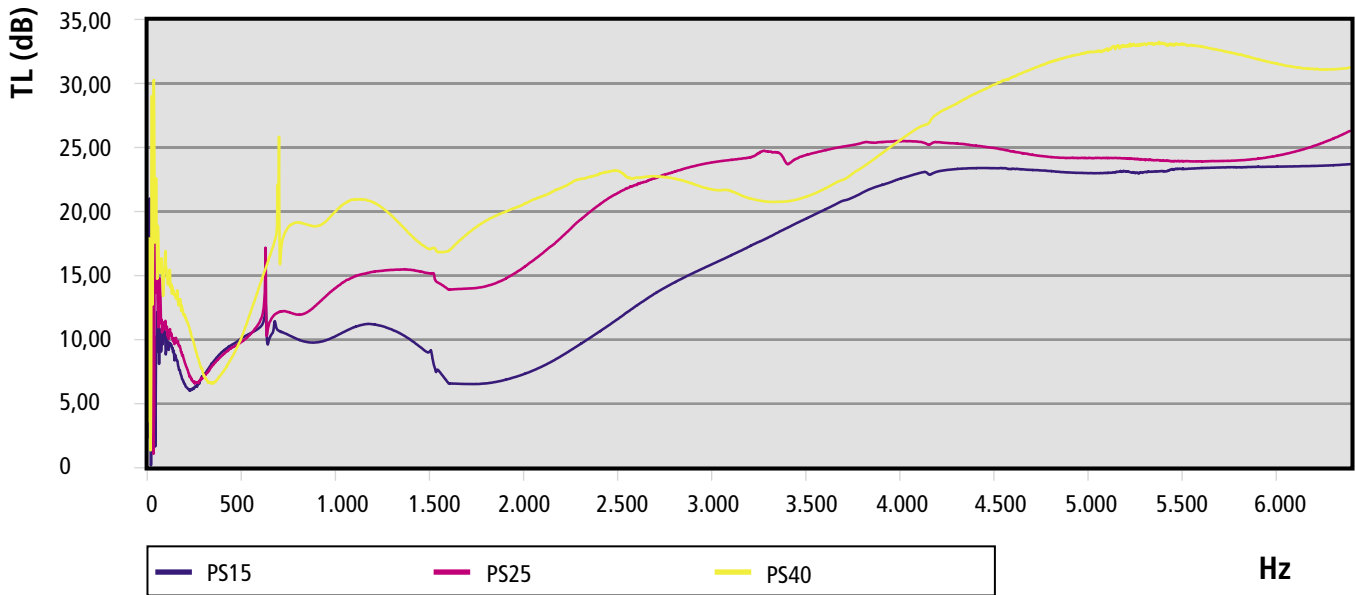
1200x1000mm Sheets.  
15mm thick, 8 Sheets per box.  
25mm thick, 5 Sheets per box.  
40mm thick, 3 Sheets per box.

● 1500mm wide x approx. 20m long Rolls.

DESCRIP.	FORMAT	SELF-ADHESIVE	REF.
PS-15 sheet	■	-	26002
PS-15 A sheet	■	Y	26092
PS-15 roll	●	-	26058
PS-15 A roll	●	Y	26095
PS-25 sheet	■	-	26005
PS-25 A sheet	■	Y	26093
PS-25 roll	●	-	26059
PS-25 A roll	●	Y	26096
PS-40 sheet	■	-	26008
PS-40 A sheet	■	Y	26094
PS-40 roll	●	-	26060
PS-40 A roll	●	Y	26097

Transmission Loss (dB)

PS WHITE



Absorption coefficient

PS WHITE

